

RI-R60

IT NETWORKS INSULATION CONTROL 760 VAC



General Characteristics



RI-R60 is a device that allows to control the insulation to earth in alternating neutral networks up to 760 V (IT systems).

Putting a continuous component measure signal between the insulated line and earth it's possible to control the insulation resistance reading the dispersion current generated to earth.

These devices have two trip thresholds (ALARM and TRIP) adjustable using the frontal micro-switches to signal when the insulation go under the threshold level.

The frontal LED signaling the trip. Two free voltage changeover contacts relays allow the remote trip signaling. The relays can be programmed with the fail safe (normally excited).

The device is supplied on the front panel of a TEST and a RESET push-buttons. The test can be activated thanks to the push-button on the device or to external push-button while the reset that can be set in manual or in automatic and activated, as the test, with the local or remote push-button.

The level of the insulation resistance is displayed on the bar LED on the front panel.

Features

INSULATION MONITORING UP TO 1000 VAC

DOUBLE MONITORING THRESHOLD FOR MORE EFFECTIVE FAULT PREVENTION

FAIL SAFE DOUBLE RELAY FOR EFFECTIVE SYSTEM CONTROL AND TIMELY MONITORING, EVEN IN CASE OF SUPPLY FAILURE

INSTANT DISPLAY OF INSULATION LEVEL

TEST AND RESET CAN BE REMOTELY OPERATED BY A PUSHBUTTON

VISUAL INDICATION OF THE NETWORK STATUS

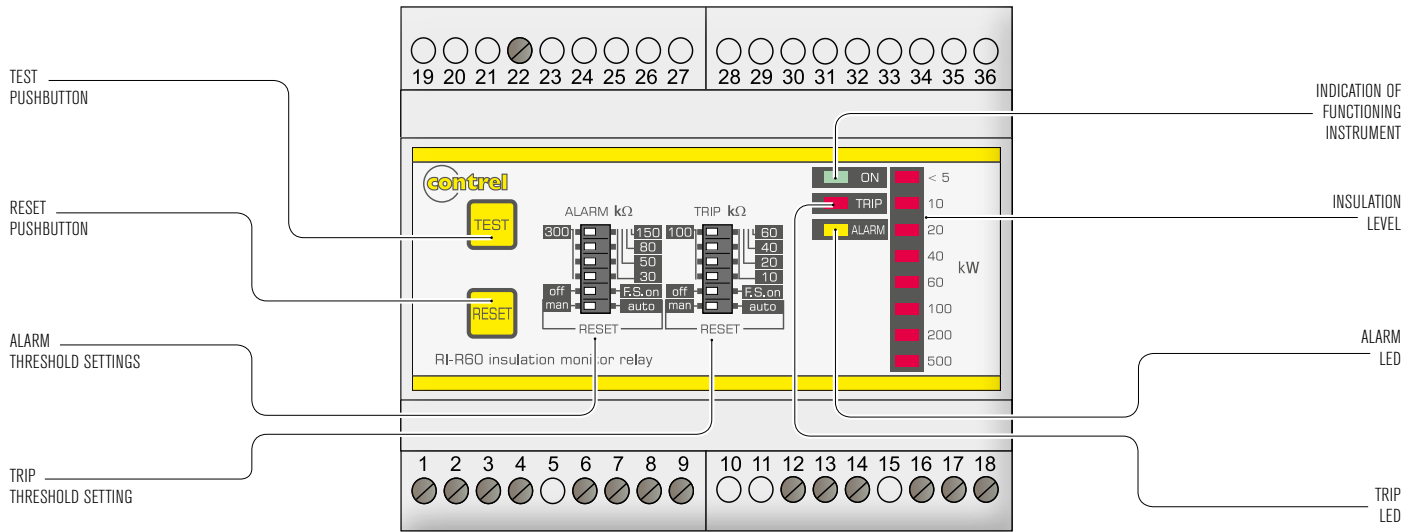
Technical characteristics

Controlled network voltage	500-760 VAC
Power consumption	5
ALARM threshold setting	30÷300 kΩ
TRIP threshold setting	10÷100 kΩ
Tripping delay	< 5 sec
Max measuring current	0.240 mA
Max measuring voltage	48 VDC
Internal impedance	200 kΩ
TRIP Relay number NO-C-NC	1
ALARM Relay number NO-C-NC	1

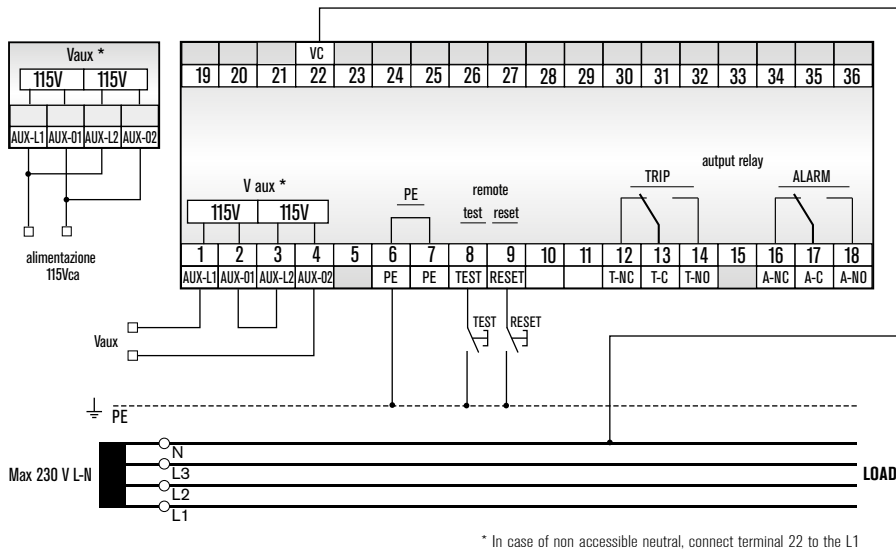
Max relay contact capacity	250V - 5A
Operating temperature	-10 ÷ 60 °C
Storage temperature	-20 ÷ 80 °C
Relative humidity	≤ 95%
Max terminal section	2.5 mm ²
Protection degree	IP40 front IP20 housing
Insulation test	3 kV 60 sec. / 4 kV imp 1.2/50 μs
Modules	6
Weight	500 g
Standards	EN 61010-1, EN 61557-8, EN 61326-1

ORDER CODE	VERSION	Vaux	DESCRIPTION	CONTROLLED NETWORK VOLTAGE	MODULES
RI-R60	ALARM and TRIP threshold setting, insulation level display	110-230 VAC	IT networks insulation control up to 760 VAC	500-760 VAC	6
RI-R60 1000	ALARM and TRIP threshold setting, insulation level display	110-230 VAC	IT networks insulation control up to 1000 VAC (with ARI-R60 adapter)	1000 VAC	6

Operators



Wiring diagrams



Mechanical dimensions (mm)

