

RI-F22 | RI-R22

IT NETWORKS INSULATION CONTROL 230 VAC



General Characteristics



Features

INSULATION MONITORING UP TO 230 VAC

RESET PUSHBUTTON (ONLY FOR RI-R22)

INDICATION OF FUNCTIONING INSTRUMENT

LOW INSULATION LED

TEST PUSHBUTTON

TRIP THRESHOLD SETTING (ONLY FOR RI-R22)

These devices allow the insulation monitoring to earth of electric networks in alternate current up to 230 VAC isolated (IT systems). Insulation resistance monitoring is carried out applying a measure's signaling in direct-current between isolated network and heart. Surveying electric leakage set up on earth it's possible to measure insulation level. It's available a changeover contact relay to use the low insulation signaling in a remote panel. On frontal panel, devices have signal for activity ON, for TRIP (low insulation), a test button. The TRIP threshold is fixed to 100 kOhm (version RI-F22), or can be regulate by a frontal potentiometer (version RI-R22).

Technical characteristics

Controlled network voltage	230 VAC
Power consumption	3 VA
ALARM threshold setting	-
TRIP threshold setting	100 kΩ (RI-F22) 25÷100 kΩ (RI-R22)
Tripping delay	< 5 sec
Max measuring current	0.1 mA
Max measuring voltage	12 VDC
Internal impedance	250 kΩ
TRIP Relay number NO-C-NC	1
ALARM Relay number NO-C-NC	-

Max relay contact capacity	250V - 5A
Operating temperature	-10 ÷ 60 °C
Storage temperature	-20 ÷ 80 °C
Relative humidity	≤ 95%
Max terminal section	4 mm ²
Protection degree	IP40 front IP20 housing
Insulation test	2.5 kV 60 sec 4 kV imp 1.2/50 μs
Modules	3
Weight	200 g
Standards	EN 61010-1, EN 61557-8, EN 61326-1

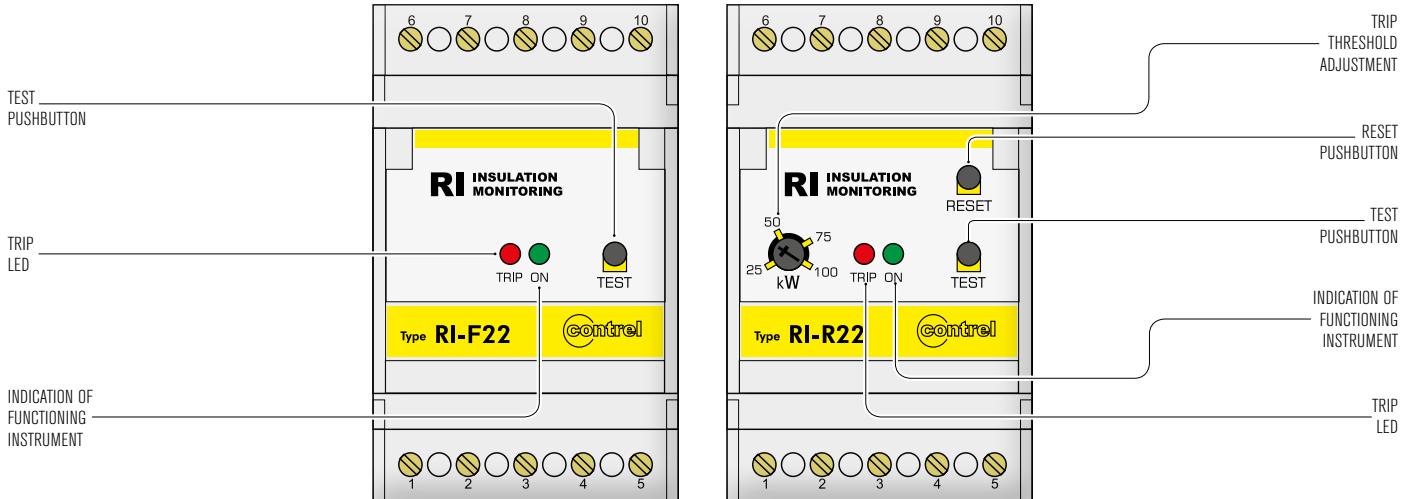
ORDER CODE	VERSION	Vaux	DESCRIPTION	CONTROLLED NETWORK VOLTAGE	MODULES
RI-F22 115	ALARM and TRIP threshold setting Damaged pole LED	115 VAC	IT networks insulation control 230 VAC	220-240 VAC	3
RI-F22 230	ALARM and TRIP threshold setting, damaged pole LED, insulation level display	230 VAC	IT networks insulation control 230 VAC	220-240 VAC	3
RI-R22 24	ALARM and TRIP threshold setting Damaged pole LED	24 VDC	IT networks insulation control 230 VAC	220-240 VAC	3
RI-R22 115	ALARM and TRIP threshold setting, damaged pole LED, insulation level display	115 VAC	IT networks insulation control 230 VAC	220-240 VAC	3
RI-R22 230	ALARM and TRIP threshold setting, damaged pole LED, insulation level display	230 VAC	IT networks insulation control 230 VAC	220-240 VAC	3
RI-R22 1000	ALARM and TRIP threshold setting, damaged pole LED, insulation level display	115 or 230 VCA	IT networks insulation control 1000 VAC (whith ADAPTER)	max 1000 VAC	3

RI-F22 | RI-R22

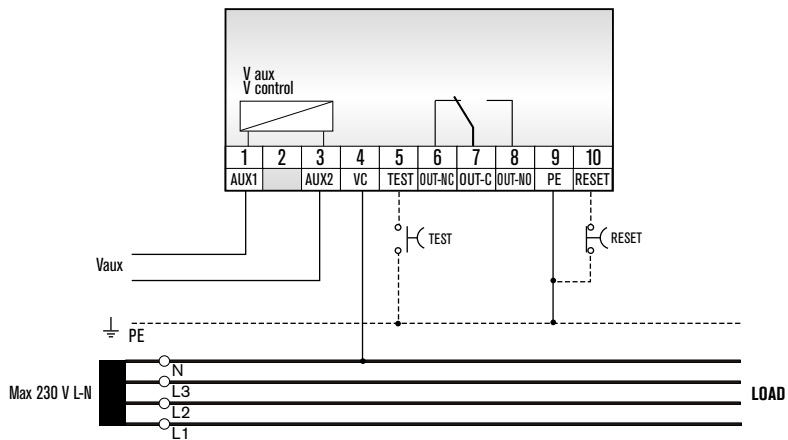
IT NETWORKS INSULATION CONTROL 230 VAC



Operators



Wiring diagrams



Mechanical dimensions (mm)

