

EMM-4L Flush-Mount LCD Multimeter

THE EMM-4L MULTIMETER IS IDEAL TO COMBINE THE MAXIMUM EASINESS OF OPERATIONS TOGETHER WITH ADVANCED FEATURES.

The backlit LCD display provides a user-friendly interface and easy to viewing the measurements with high accuracy.

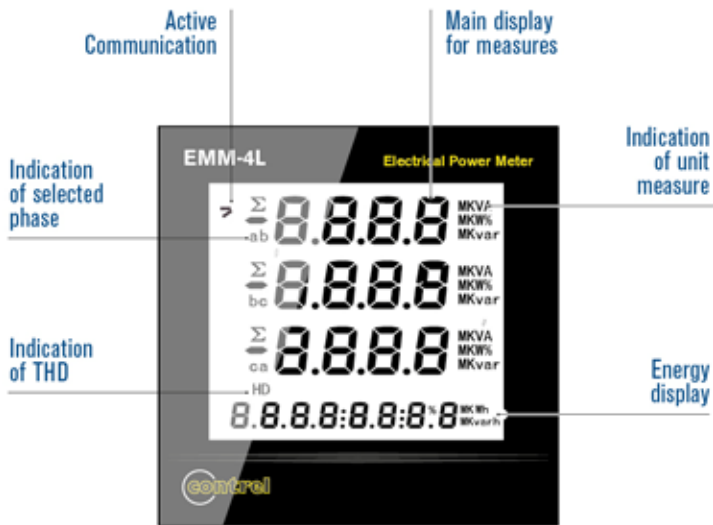
- High accuracy TRMS measurements
- Wide selection of electrical measures, including THD voltage and THD current
- Wide range power supply (85-264 VAC)
- 4 navigation keys for functions and settings
- Password protection for settings
- Tool-less panel mount
- Pulses output
- Built-in RS485 interface (Modbus RTU)



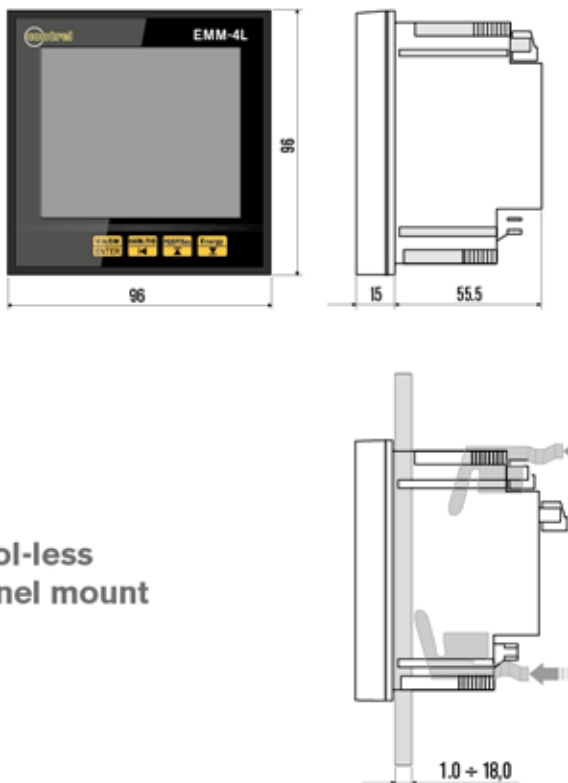
Low-profile housing
DIN 96 x 96 x 55.5 mm

control elettronica

Display indications



Mechanical dimensions (mm)



Tool-less panel mount

EMM-4L Technical characteristics

AUXILIARY SUPPLY	
Rated voltage	85 - 264 VAC
Frequency	45 - 65 Hz
Power consumption/dissipation	<10VA / <3W
VOLTAGE INPUTS	
Type of input	Three phase + neutral
Measurement range	40-400V LN 60-600V LL
Frequency range	45 - 65 Hz
Method of measuring	True RMS value
Method of connection	Single-phase, two-phase, three-phase with or without neutral or balanced
CURRENT INPUTS	
Rated current	5A
Measurement range	For 5A scale: 0,010 - 10A
Type of input	CT supplied by an external current transformer. Max 5A
Overload capacity	10A
Overload peak	100A for 1 second
Measuring method	True RMS value
Burden	<0,1VA
ACCURACY	
Voltage	0,5%
Current	0,5%
Active energy	1,0%
RS485 SERIAL INTERFACE	
Baud-rate	Programmabile 1200 - 38400 bps
PULSES OUTPUT (optional)	
Output number	1
Pulse number	1...9999 (x0,1 pulses / kWh o kVArh)
Pulse duration	0...5000ms
External voltage	40VDC
Max current	50mA
VOLTAGE INPUT CONNECTIONS	
Type of terminals	Screw (fixed)
Number of terminals	4 for voltage inputs
Conductor cross section	0,2 - 4 mmq (26 - 10 AWG)
CURRENT CONNECTIONS	
Type of terminals	Screw (fixed)
Number of terminals	6 for external CT connection
Conductor cross section	0,5 - 4 mmq (26 - 10 AWG)
INSULATION	
Insulation voltage	2kV for 1 minute
HOUSING	
Mounting	Flush mount
Dimension L x H x P	96 x 96 x 70,5 mm
Cutout	90 x 90 mm
Protection degree	IP50 on front IP20 housing
Weight	<400g
AMBIENT CONDITIONS	
Operating temperature	0...+60 °C
Storage temperature	-10...+70 °C
Relative humidity	5...95%
COMPLIANCE	
Reference standards	EN613206:2006, EN61010-1:2010



ISO 9001

control elettronica

CONTROL elettronica s.r.l. - Via San Fereolo 9, 26900 LODI
Tel. +39 0371 30207 - Fax +39 0371 32819 - e-mail: control@control.eu



WEB INFO
www.control.it